

# Alteration with small means

Metallgrillen

**Erik Wikström 2013**



## the Assignment

Kopparlunden is an old industrial area in central Västerås. There is a desire from the municipality to integrate the area with the rest of the inner city and become a vibrant and multifunctional part of Västerås. The area consists of large workshops and smaller old office buildings with an existing network of roads.

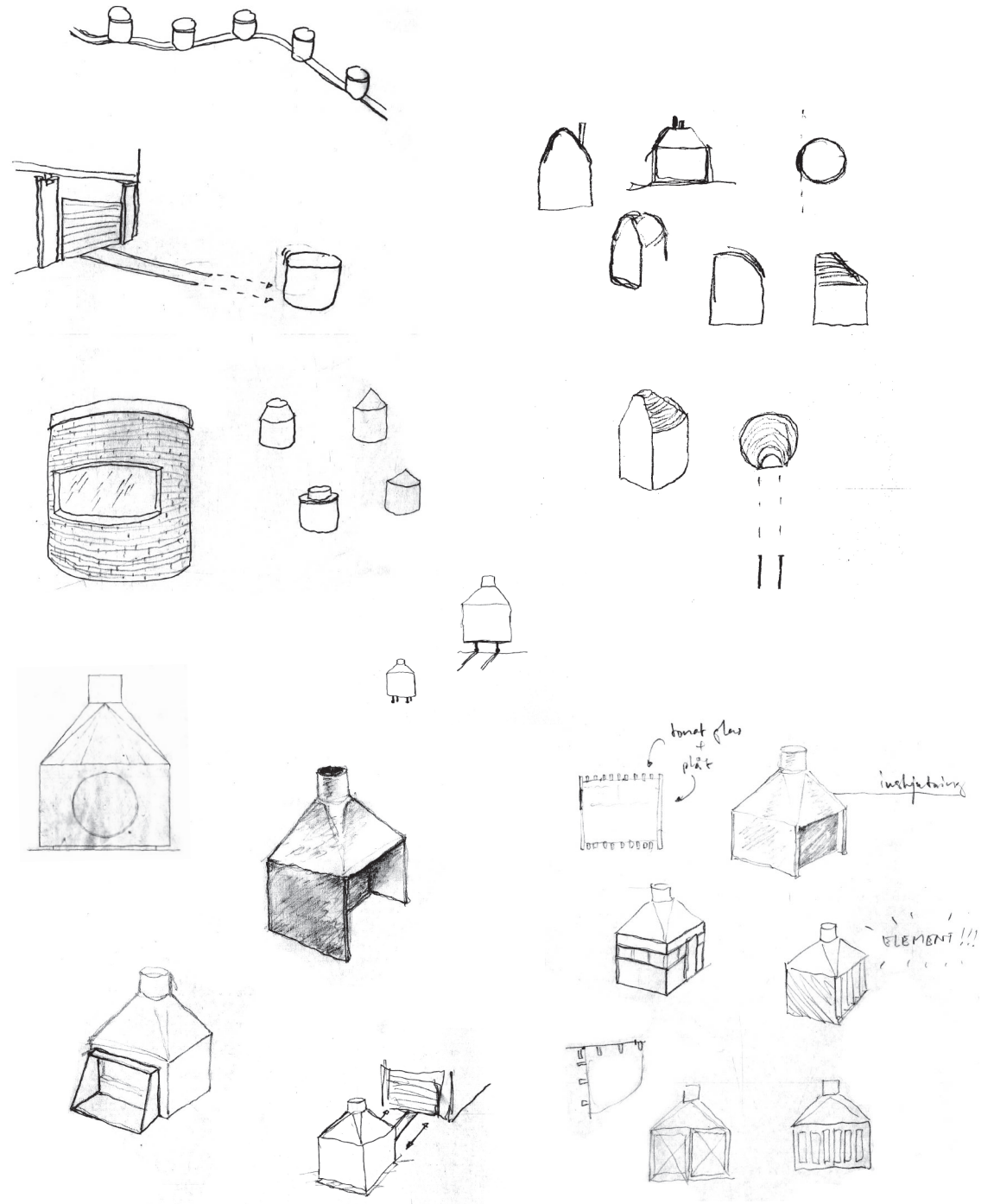
The task in this first assignment was to design something of a small or simple design which could activate it in a wider range than today and make it interact with the rest of Västerås.



## an Idea

When visited the site, there was old tracks in the ground which caught my interest. They were cut off with layers of asphalt from new roads crossing and there was a tension because of their abrupt endings. Especially on one spot where a pair of tracks continued (or ended) inside the big empty Emaus workshop whereas on the other end they were cut off by the new road.

The rails and their relation to the old factory inspired me to build up a scenario corresponding to the old factory and which could reactivate the rails. The idea was to create a small pavilion which could be imagined as a product from the factory left on the rails.







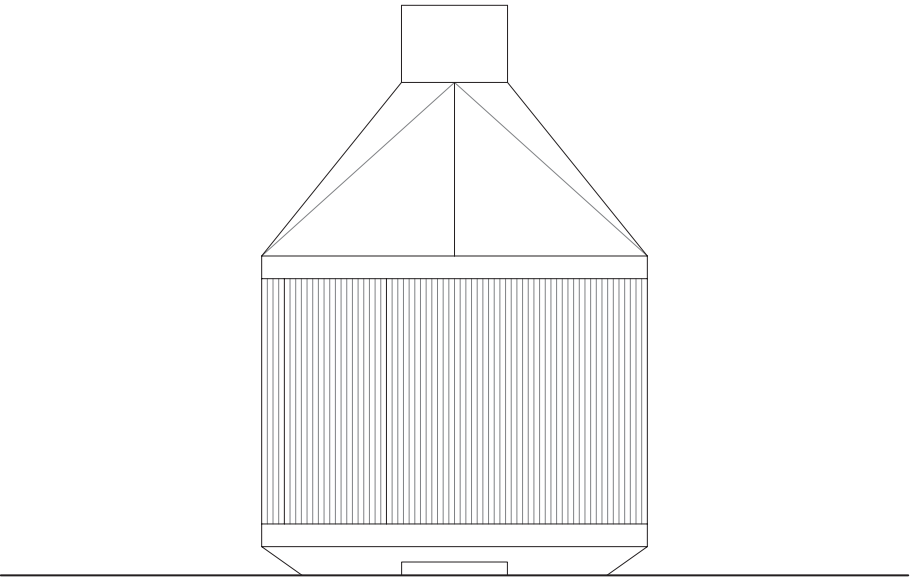
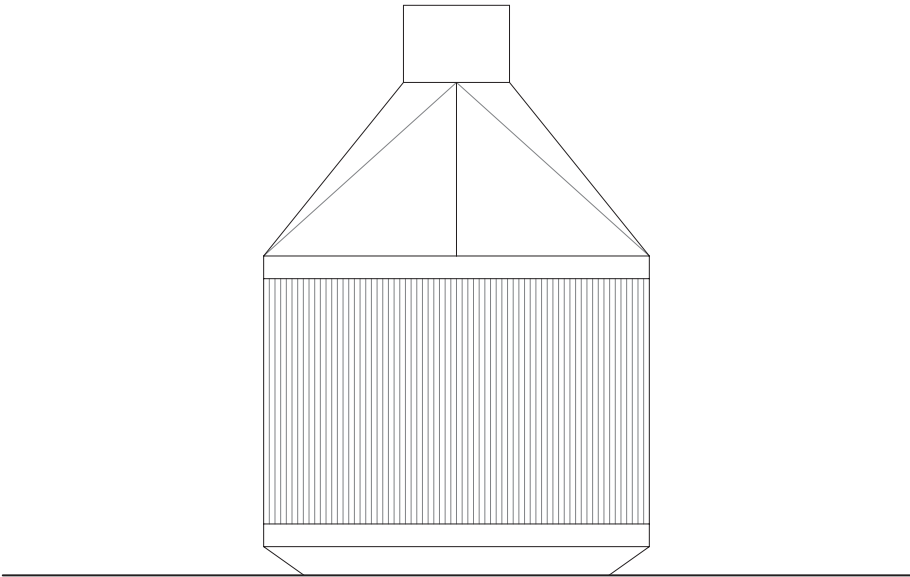
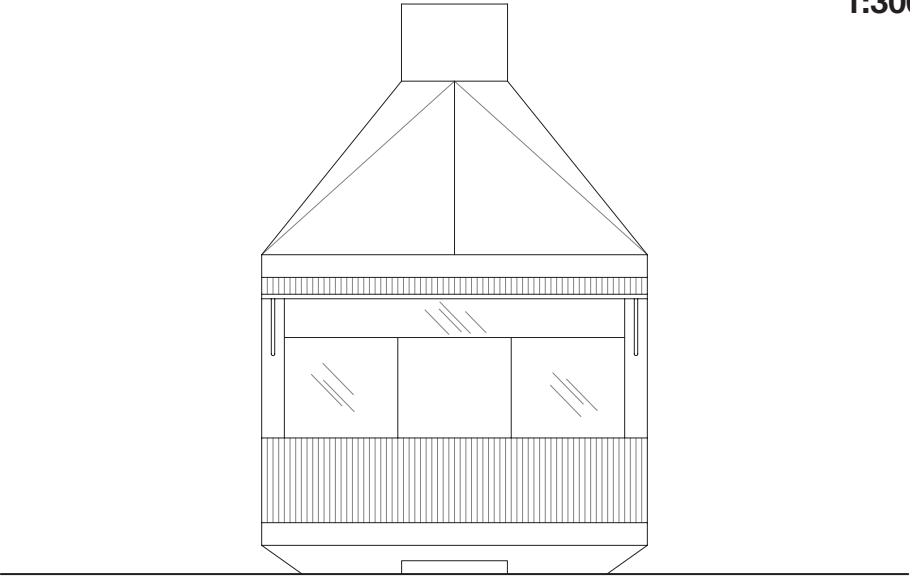
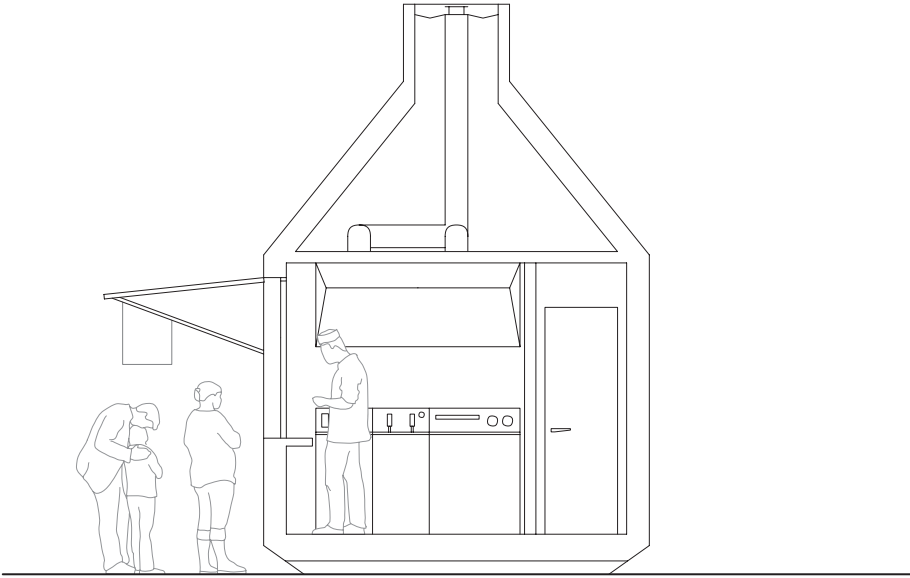
## Final Product – Metallgrillen

The metallkiosks are small service boxes. They offer not only culinary treats in such as local sausages and spicy woks, but also public WC. People from whole Västerås are by now acquainted with them. The service boxes are placed on the old rails on different places in the area of Kopparlunden. Like old products from the closed factorys they are still waiting to be delivered to their final destination. Meanwhile, when isolated on their cut of rails, they offer services to the people visit the area.

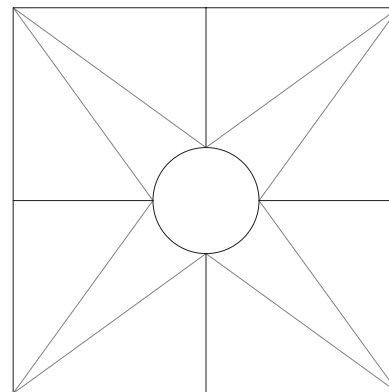
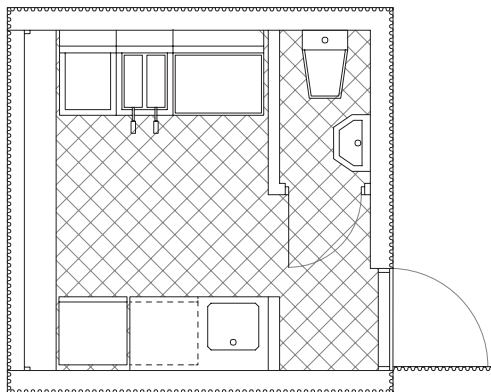
The word is spread around not only about their good facilities but also their cocky look wich contributes to the high quality of existing architecture of Kopparlunden.

Above: Siteplan 1:8000 with first product

Left: Photo of model in scale 1:50



**Plan and top elevation**  
**1:300**



**Elevation**  
**1:1000**