

R29 WORKSTATION

The most advanced working device ever seen!
A powerful setup of groundbreaking technics
offering the replacer of not only the working
desk and its computer, but also the whole
office environment.

3D-screen

Foldable 46" screen supporting both
traditional 2D touch functions aswell
as advanced 3D interaction functions

Soft underarm
supporting edge

Adjustment of height

Adjustment for
placement of break

Adjustment of angle

Hologram transmitter

Screen controlled, it allows every-
thing from simple curtain functions to
advanced 3D-video calls

Not an ordinary 46"

Princess Leia beeming out from R2D2 is no longer fiction. The 3D-screens are here, and they are here to take over!
This screen not only projects images and objects in 3D but also lets you interact with them. A sensor register your movements and lets you work with the projections directly. A cad-workers dream!

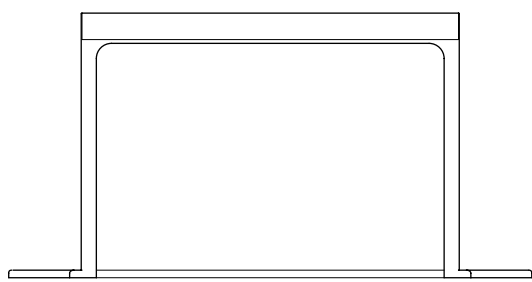
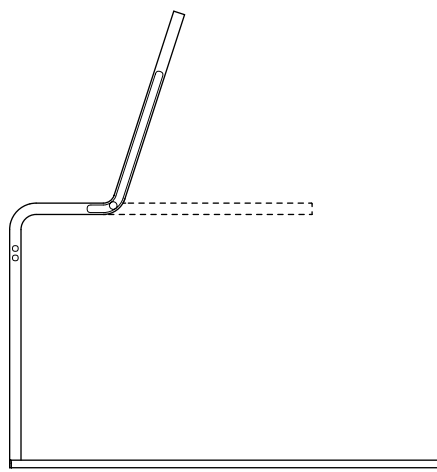
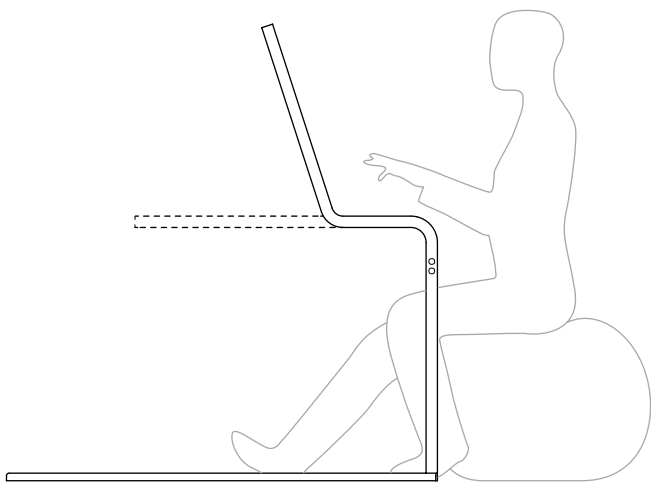
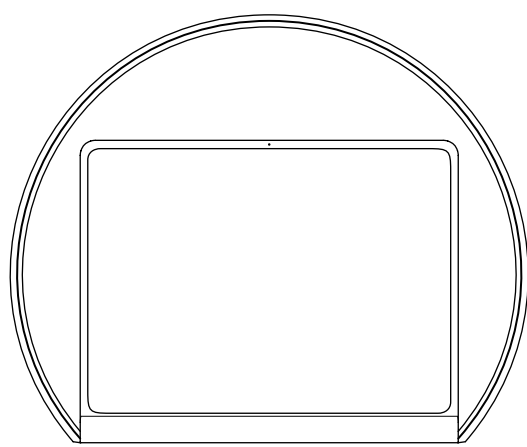
The screen is not just a flat screen but a flexible screen. Wich means that you can bend it after what suits you shaping a classic laptop position. And since it is always the same surface you can distribute the items on it between the "keyboard" to the rest of the screen.

Your dream office

With the hologram transmitter it is up to you to decide what kind of environmet you want to work in. Forget about stressy office climate or empty rooms - fill them with what ever gives you the best atmosphere for getting the work done. The ring of the R29 transmits laserbeams were three dimensional media can be projected.

This means that you can not only project the image of a surrounding - you can be in another surrounding live! I. e. have a 3D-phonecall with anyone discussing exactly what is on your table for the moment. Say good bye to skype!

Top, sides and front 1:20





The workplace of today

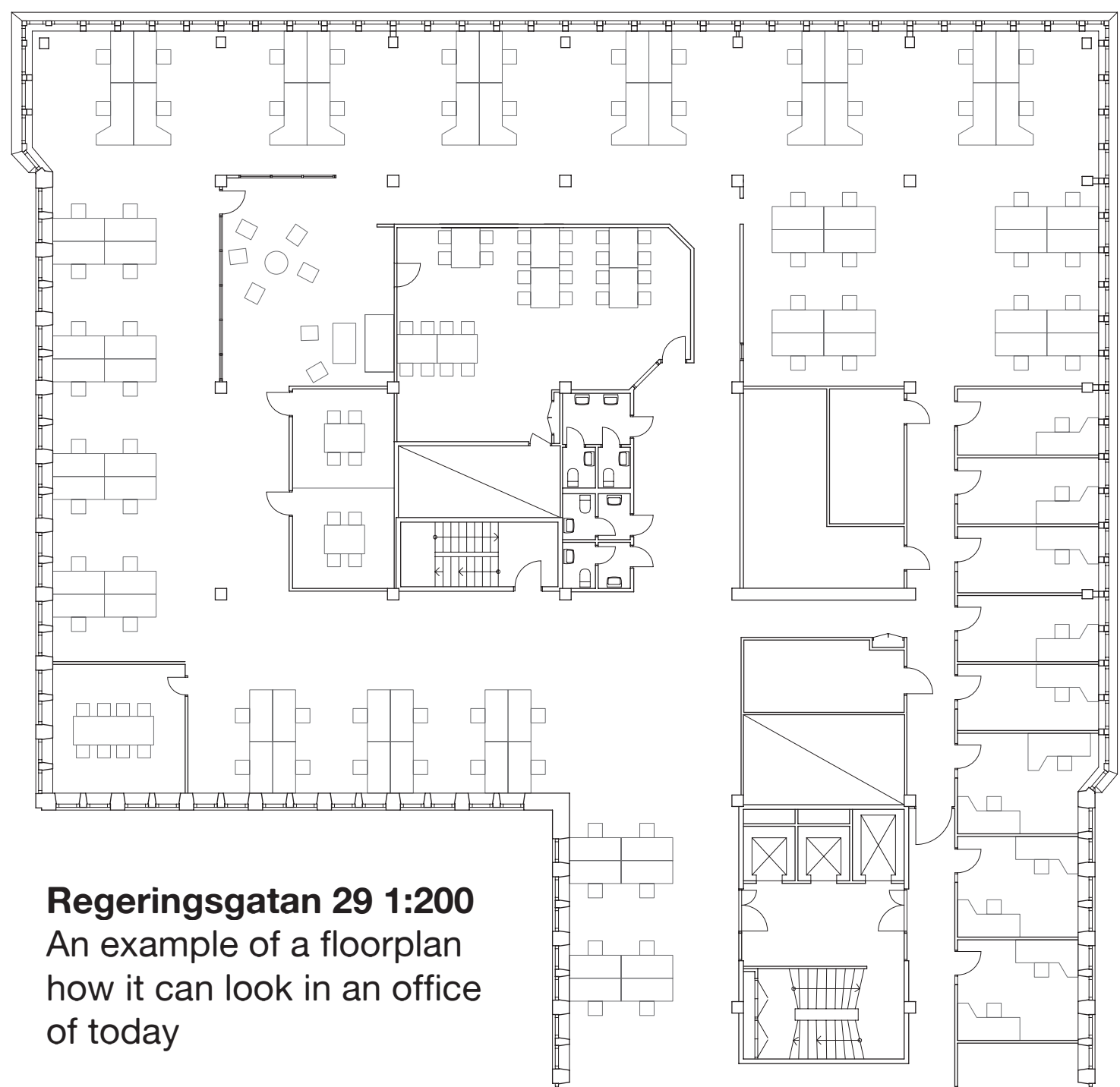
This project takes its beginning in the story of procrustes. A greek myth about a giant who invites people passing by to his home where he is generous with food and wine and lets them spend the night there. The only problem is that the bed that Procrustes offers never fits anyone. And in order to fit his bed he either cuts your feet or head of if your to long. If you are to short he stretches one until the person is of size.

The myth of Procrustes is easy to apply on many peoples working situation today. The offices are in most ways standardized after a bureaucratic structure. But since many companies are moving towards a more organic structure it is necessary to embrace that and make it visible in todays physical workplace.

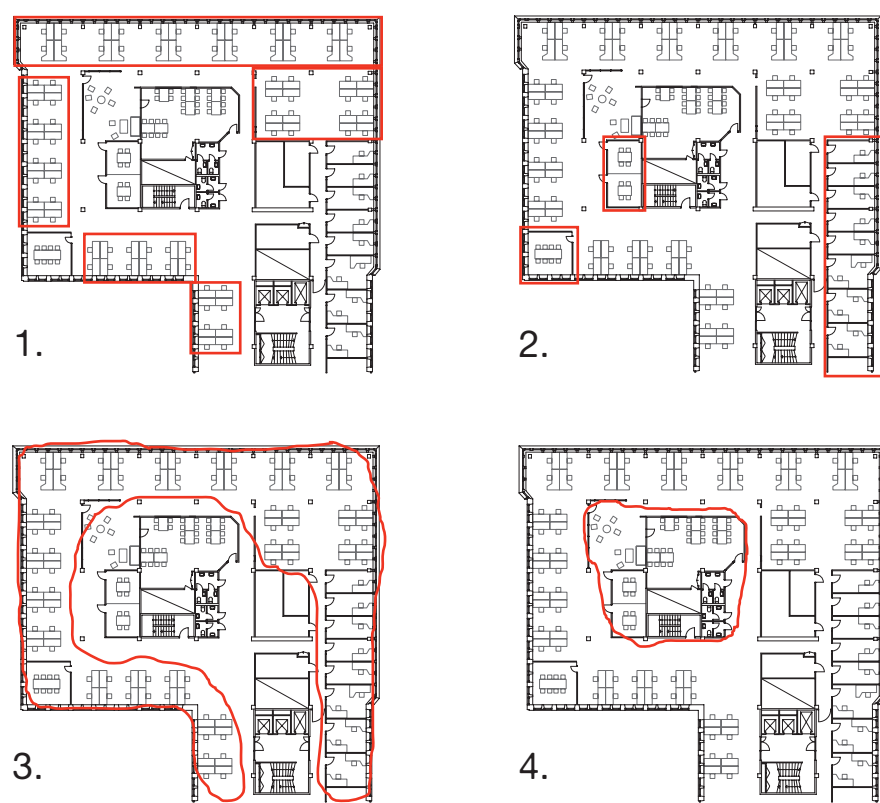
This projects aim has been to show a glimt of what the future office situation can look like, both in ways of office planning and progresses in technical solutions. The first part of the project was made in group and early stated

the individ in the office as the base and using terms like focus, flexibility and efficiency became recurrent. When continuing with the project on my own it has been crucial for me turning these terms into a physical form.

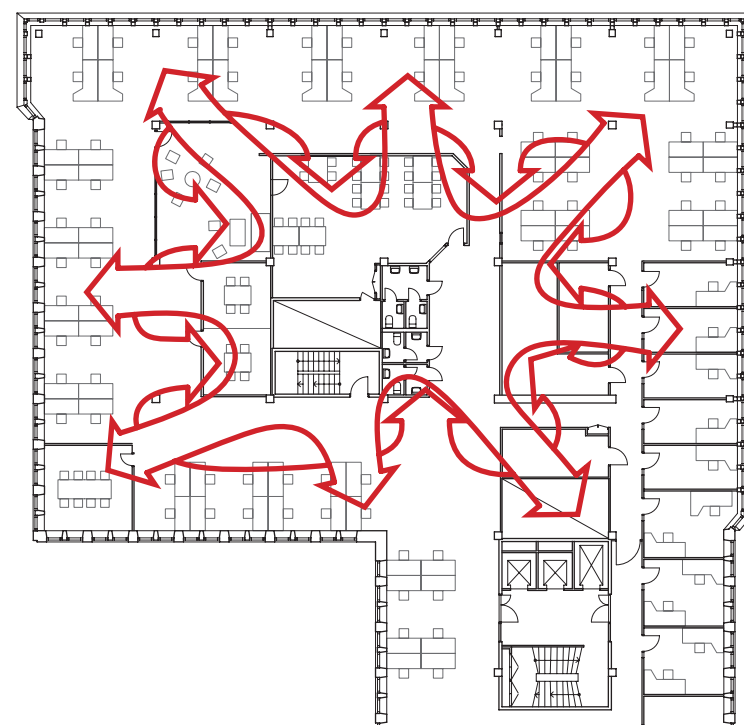
The images above are photos of scale models showing examples of an open plan office wich has been the physical starting point in this task. The full scale reference has been the address Regeringsgatan 29 wich offers todays qualities of offices.



Regeringsgatan 29 1:200
An example of a floorplan
how it can look in an office
of today

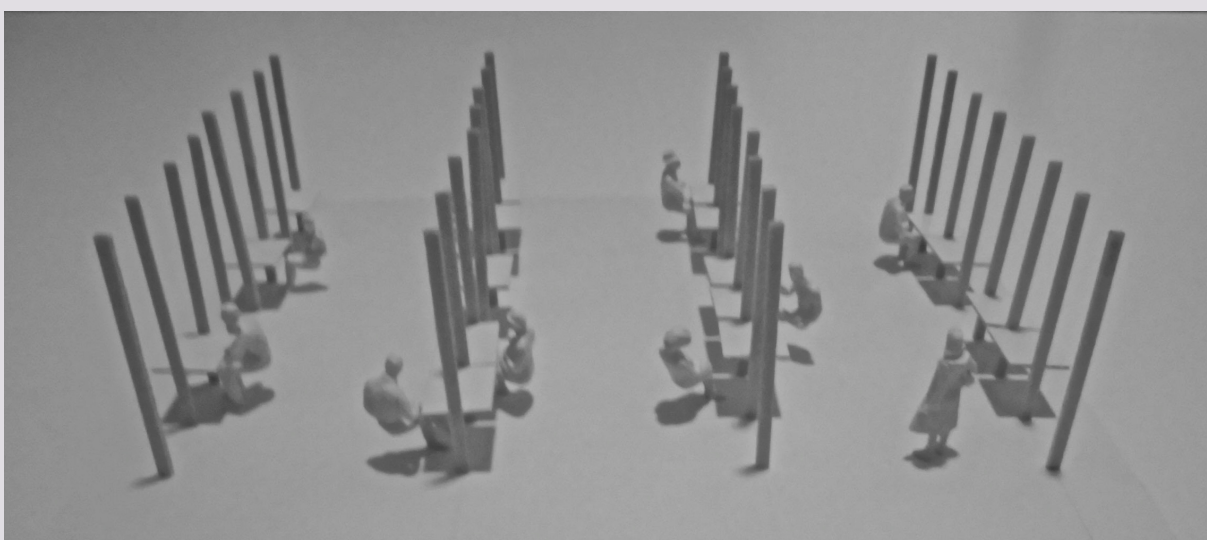
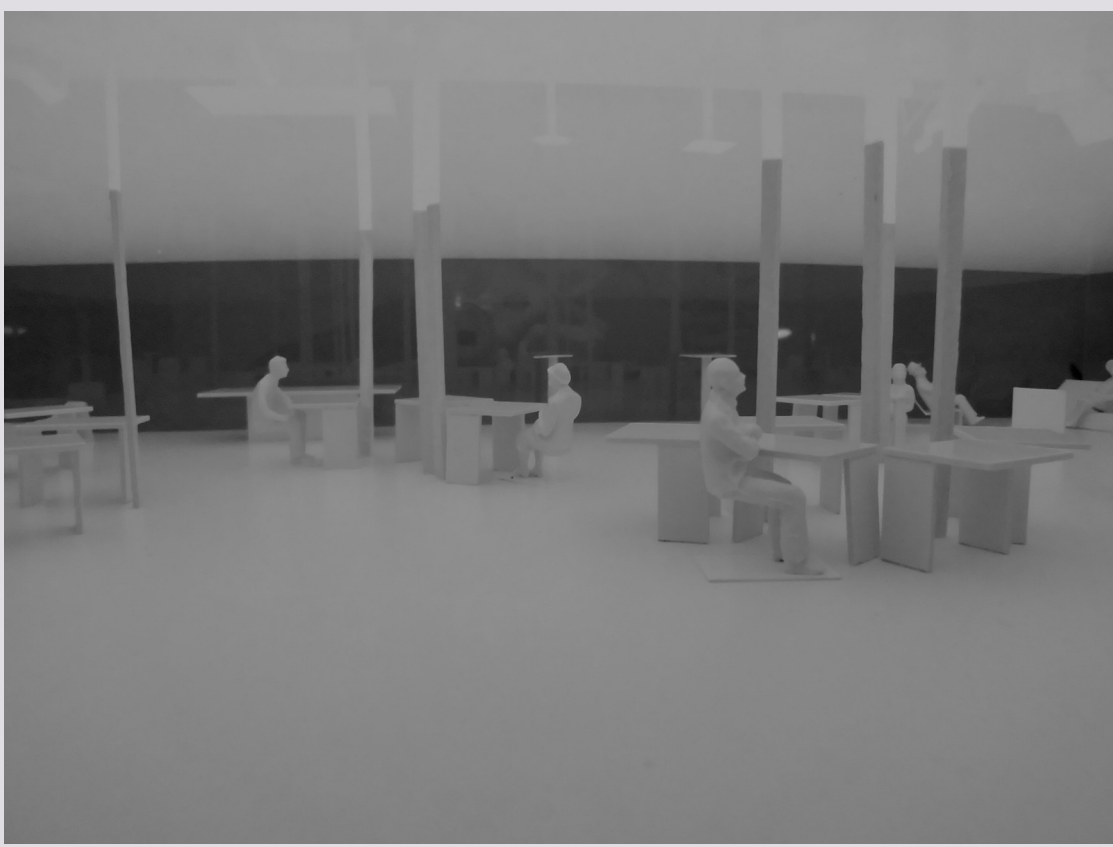


1. The office spaces are grouped in divisions. In an organic system this can easily get inefficient when the planning is often very rigid.
2. Closed meeting spaces and working cells signalizes static structures wich can lead to uninspiring working climate and beeing locked in certain routines.
3. The office spaces are places close to windows where most daylight can be reached even though during intensive work it is not perceived and therefore missused.
4. The social and professional meeting points ends up situated more in the center of the premissis, where maybe daylight is most important for loading batteries.



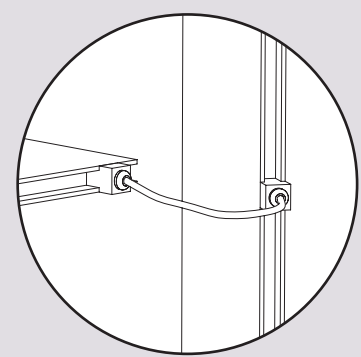
Breaking the hierarchy of the premissis gives the ability to create a homogeneous environment in the way of perceiving it. Or reprogramming the functions so that they use the space they occupy in a more efficient way.

Erasing borders improves the efficiency of the organization in many ways. Increased possibilities of communications and a more open social climate when improved unplanned interaction

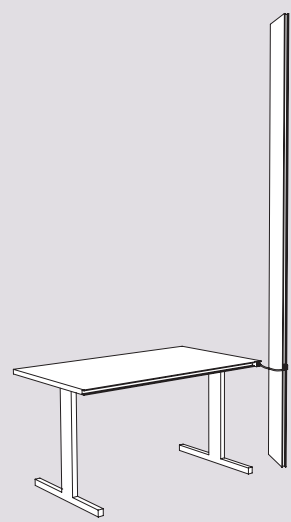


Overall idea

There was early in the process an idea about creating an office forest instead of todays office landscapes. Forests are in many ways the opposite to open landscapes in terms of beeing more complex and spatial meaning more stimulating and inviting.



Early prototype of a
workstation of the future



A key to shaping the office forest was to motivate the vertical elements shaping it. What first was for solving technical problems, later turn out the opposite - the elements were designed with help of the technology.

Demands of environment

Based on early discussions in the group we found three different way of working at offices. All three having different demands on its environment.

Single tasksolving work mode

No actual demands on the surrounding besides functions for solving the task. I. e. high demands on individual influence.

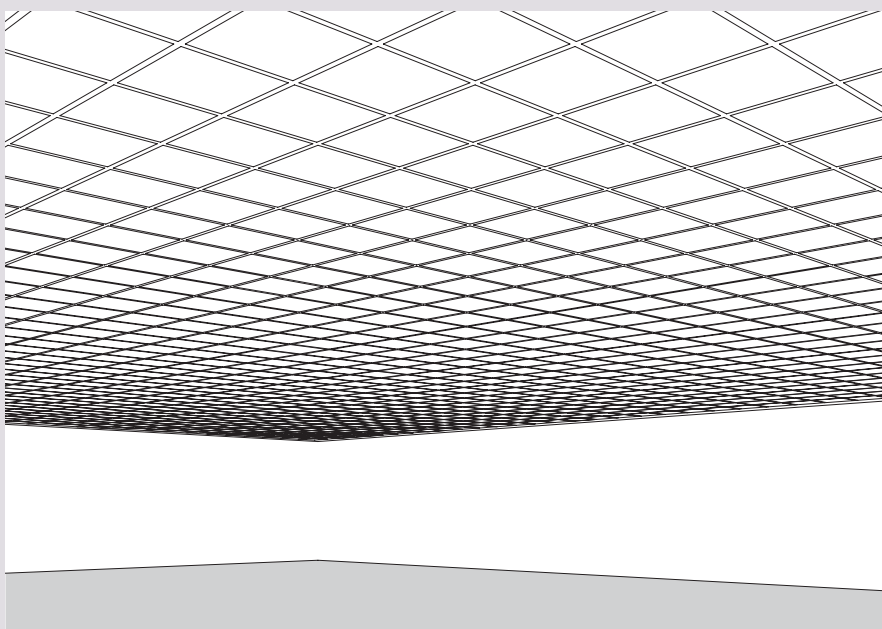
Open discussion meeting mode

An open and stimulating environment wich allows free thinking and has the ability to invite other to interact in the discussion.

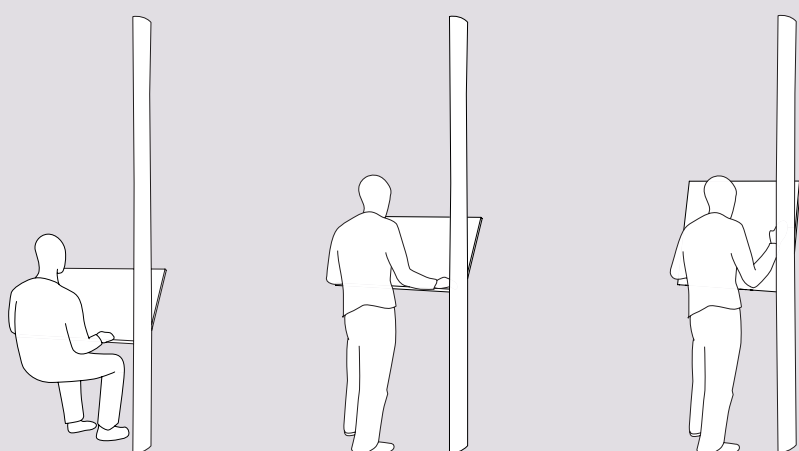
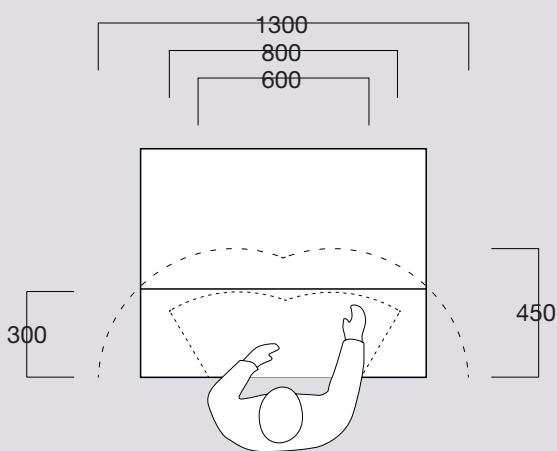
Closed meeting mode

Possibility to be isolated for closed conversations or important meetings.

In addition to these three demands there is a fourth regarding the "off duty"-time, wich means lunchbreaks and small pauses. It was important to make this fourth elemnet blend in with the other three making the breaks

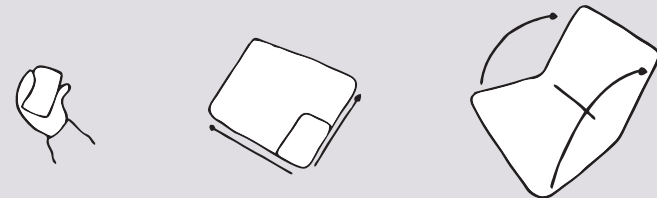


Even if the single tasksolving work mode is not in need of a view and daylight there is high demands on good illumination qualities. So if a ceiling covered with LED-screens with adjustable light- color and strength, a more homogeneous space is created within the premissis. Meaning you can have the same lightqualities sitting in the middle of the room as next to the window. This pretty much creates the ground position for the planning the interior.



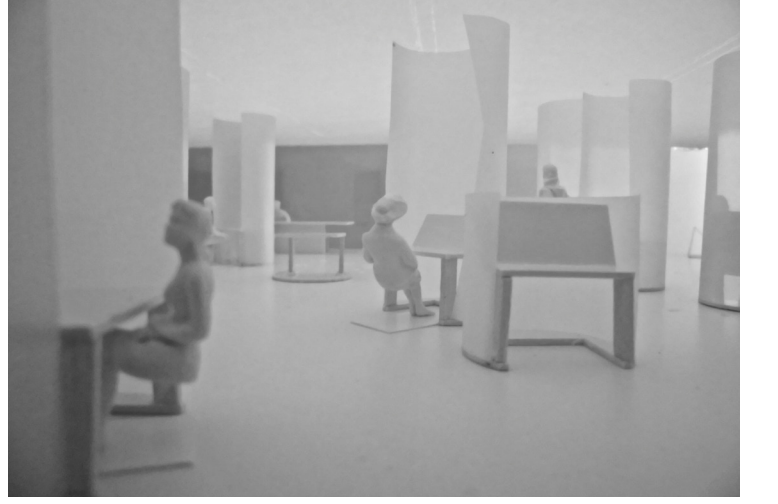
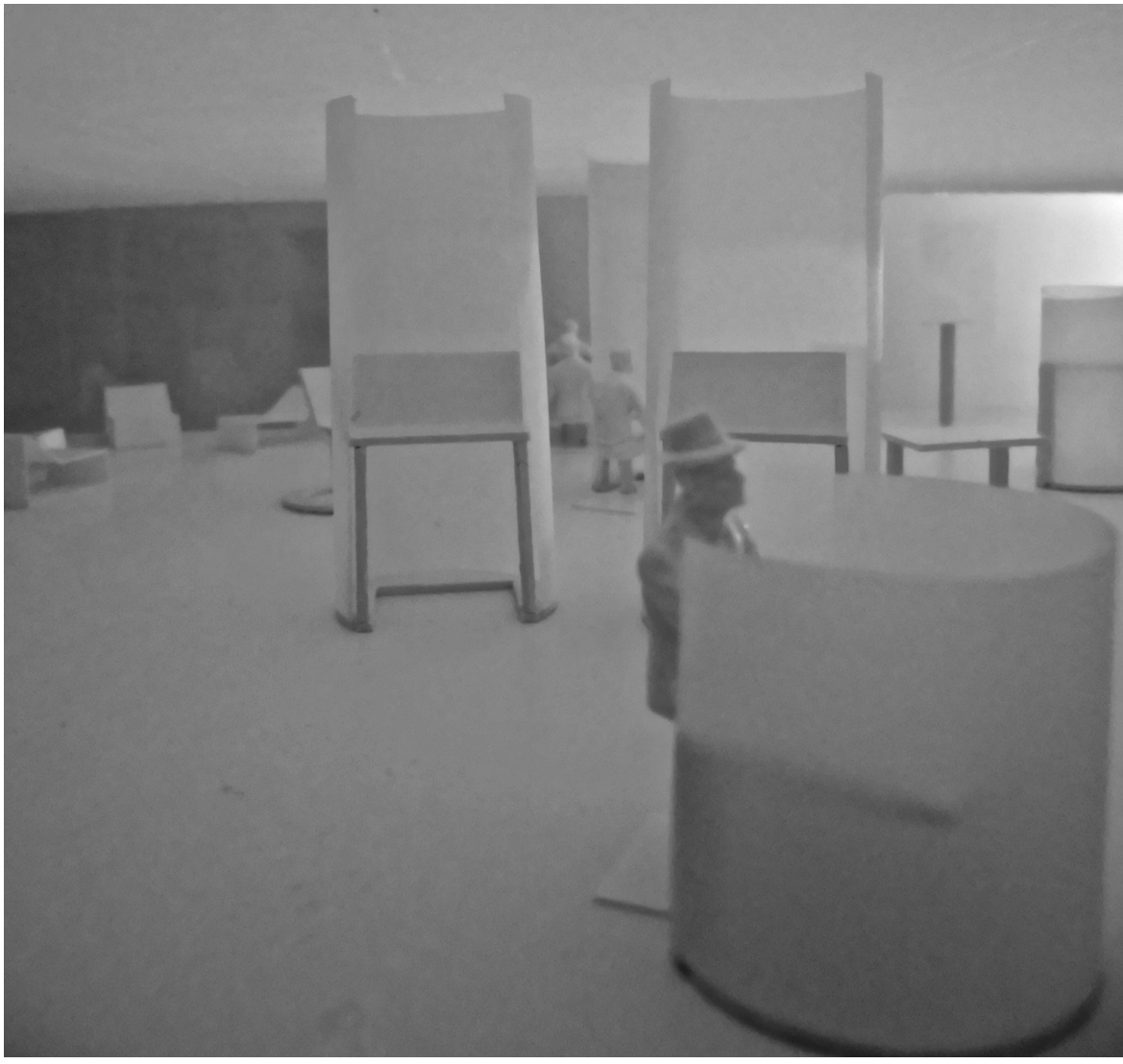
Demands on technology

With todays bendable OLED-screens the flexible screen, even if not adapted to the broad audience yet, already a fact. The three "i-devices" of shifting size and functions that we use today can very well be molded in to one smart device.



So the next step would be to take the content outside the box. Hologram and 3D-technology are already starting to do that and will be developed to a much higher level.

Even though the technology is getting smarter and more advanced in terms of working more efficient and flexible, there will always be a monotonous moment when operating longer periods. Therefore an adjustable and more ergonomic workstation will still be needed.



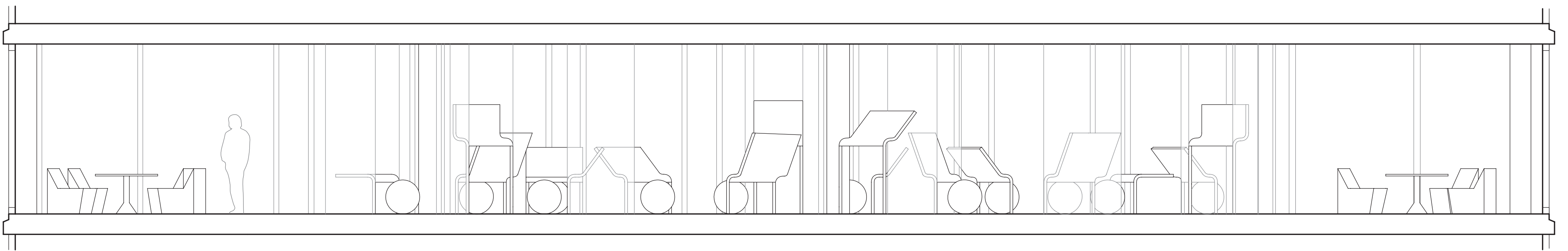
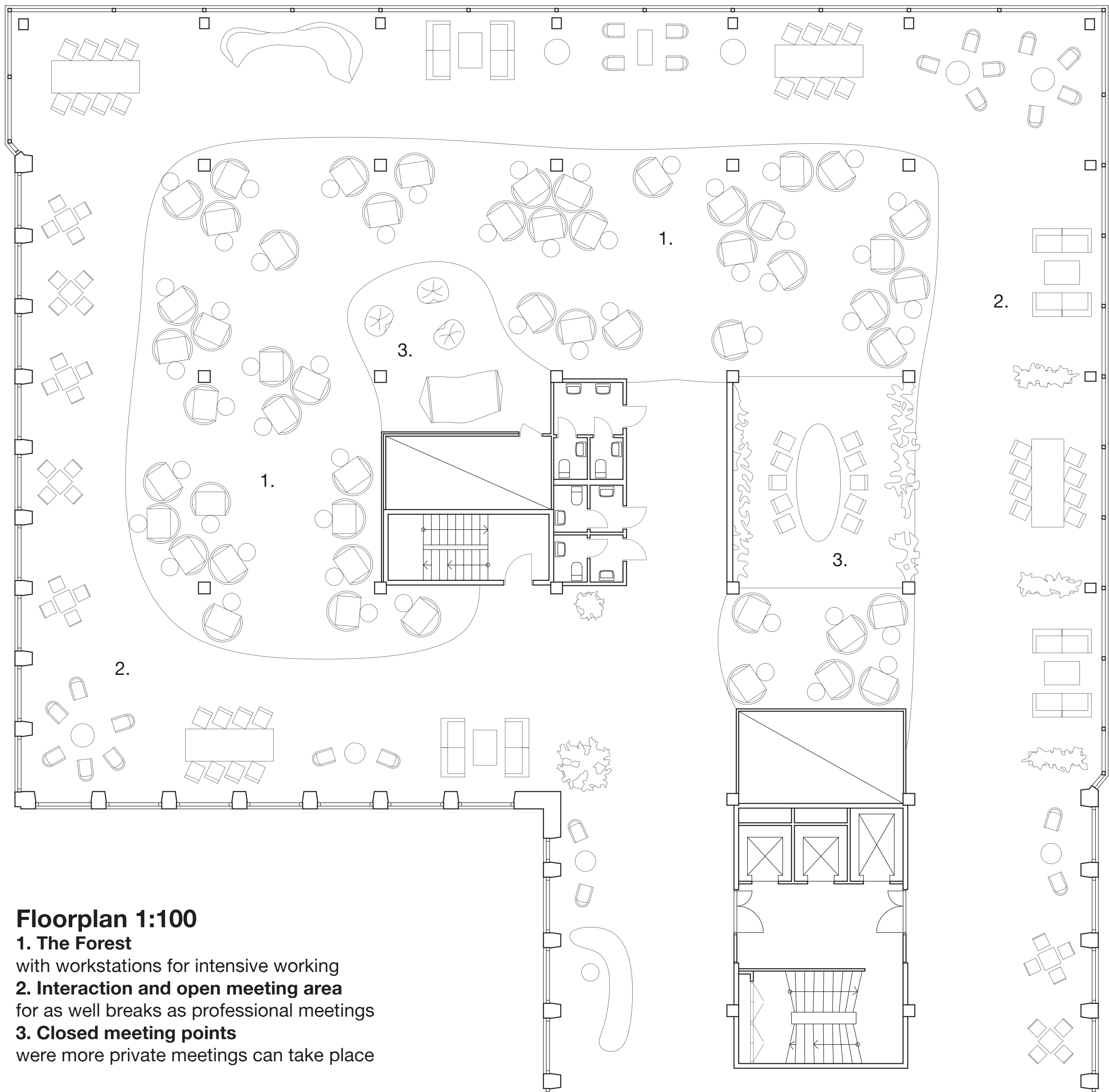
The workplace of tomorrow

The general floorplan has a geometric frame of social and professional meeting spots, surrounding an organic center with the advanced workstations. Creating as close connection to an organic organization as

possible. Inviting, inovative and inspiring. Moving through the forest of workstations you easily get access between the spaces of the interior and only optionally interacting with others due to personal hologram status on the workstations. The holograms lets you create what surroundings you need for the best working climate and gives you an ability simply erase disturbing elements around you.

In the deepest aprt of the office forest there is small glades for physical isolation Visually semiopen but closed with sound absorbing elements. All around the forest there are social and professional meeting spots wich opens up for interaction between departments, teams and single persons.

Photos illustrating the interior with the office forest



Section 1:50